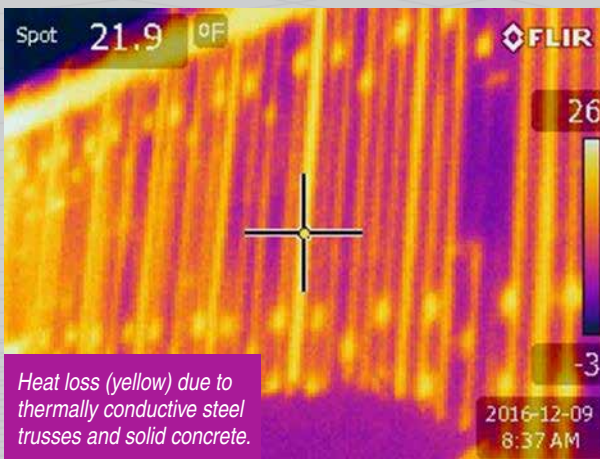


Energy Code

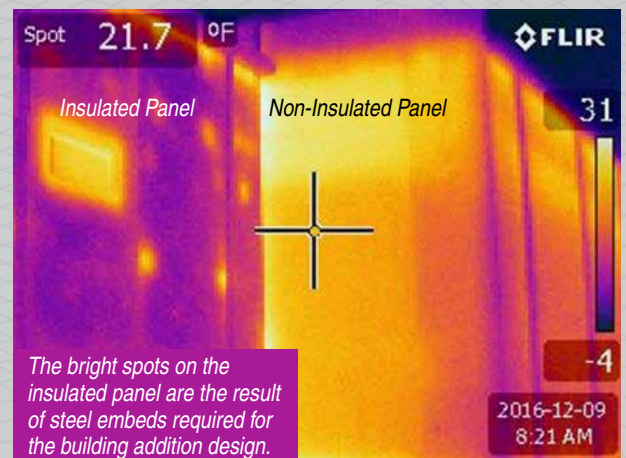
The 2012 Energy Code requires edge to edge and top to bottom insulation for compliance.

The thermal infrared image below shows a non-compliant wall panel. This composite wall was designed with steel trusses and solid concrete areas. The thermal bridging is clearly visible in the bright yellow/orange areas indicating heat loss through the wall.



Uninsulated vs Insulated

The image below shows a building addition, the right side is 6" uninsulated panels and the left side is the new addition with insulated panels. The bottom thermal image shows insulated vs un-insulated panels, the purple area is cool (insulated) and the yellow area is heat loss through the 6" un-insulated wall.



Finite Analysis

A finite analysis heat transfer model was performed on the Icon system. The panel analyzed was a 4-3-4 with one Icon connector every 8 square feet. The analysis showed that the panel retained 99% of the R-value.

The Icon composite insulated system is Code Compliant.
The Icon shear connector is non-conductive and is designed to be used with edge to edge and top to bottom insulation.

